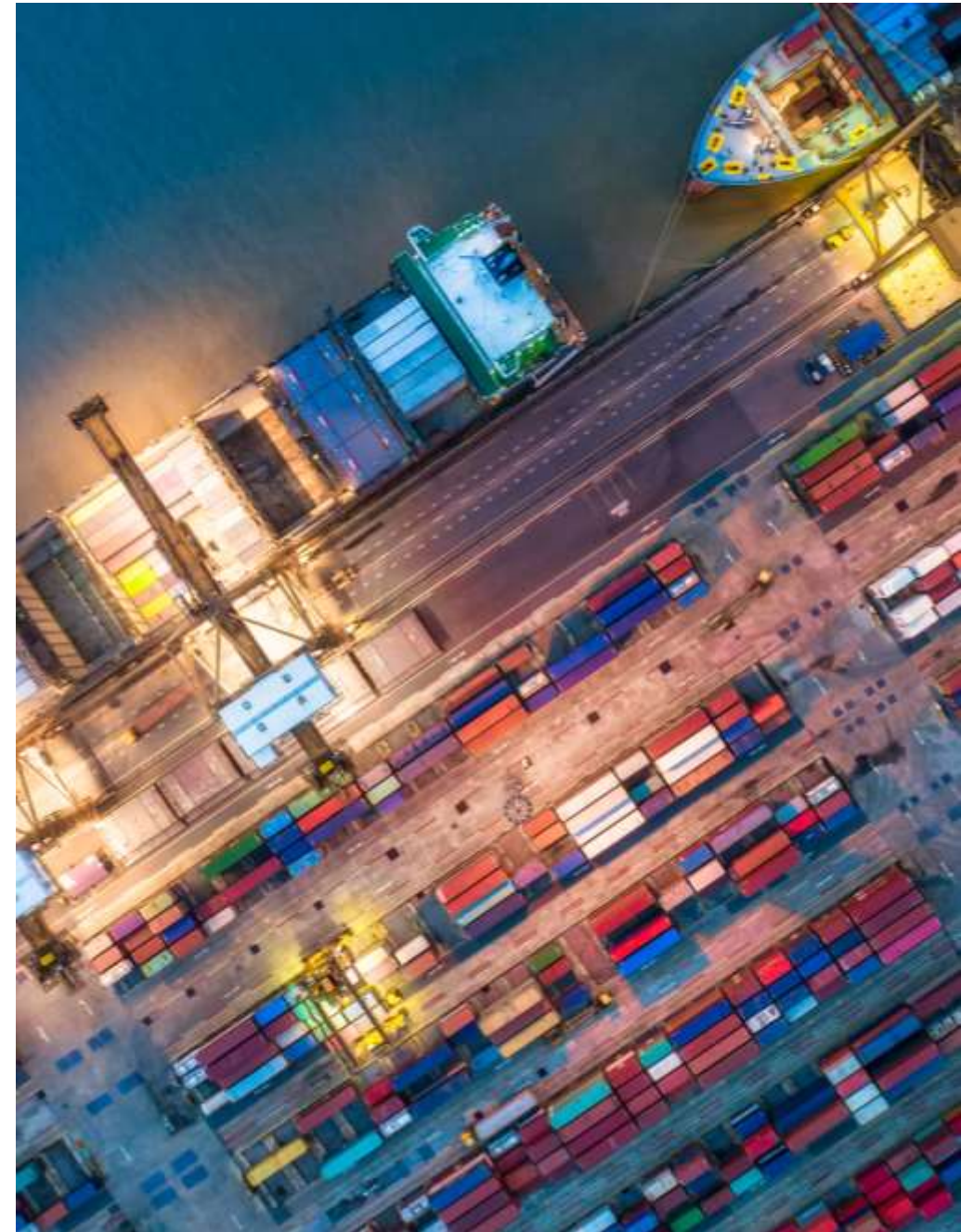


Freight Regional Forum

NARRABRI



Freight's importance to regional NSW



Regional NSW accounts for **20 per cent** of NSW's Gross State Product and **33 per cent** of goods manufactured in NSW



Approximately **39 per cent** of the value of NSW's exports is derived from agricultural, fisheries and other natural resources primarily sourced from Regional NSW

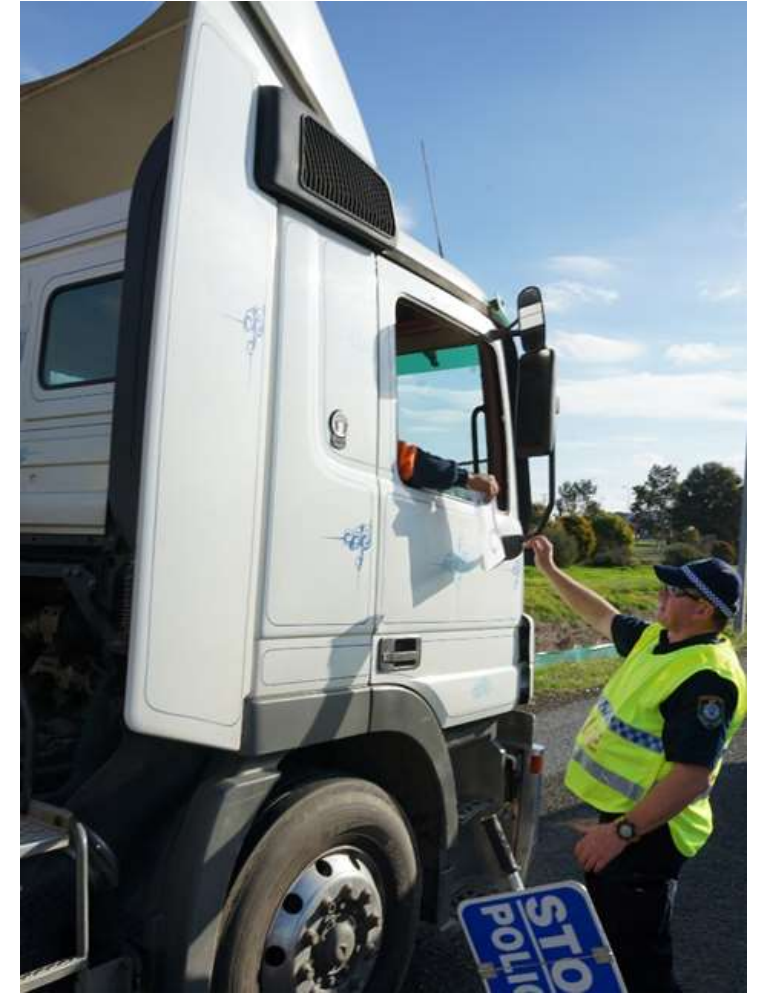


Regional NSW's freight task is forecast to grow by around **12 per cent** by 2036 – from 255 million tonnes to 286 million tonnes



Enabling the movement of freight across NSW

- **Improved access** for higher productivity vehicles
- Engagement with industry during **emergency events**
- Maintained movement of goods through **COVID**
- Key contributor to the **Heavy Vehicle National Law Review**
- Improving our service offering for **rail**
- **Rail freight level of service** and **KPI's** on the Metropolitan Rail Network
- **Last mile toolkit** for urban freight



Achieving a step change in access

- A **dramatic improvement** in access for road and rail freight
- Gaining **the most out** of the road and rail network
- Better **certainty** for industry
- Improving the **customer service**
- Improved customer experience in the safety, productivity and sustainability of freight





Safe



Productive



Sustainable

Mode	Policy framework	Program
	Heavy Vehicle Access Policy	Automated Access Assessment Program
	Standard Track Access Agreement	Freight Level of Service for Rail Freight

Other priority areas

- Heavy Vehicle Driver pathways
- Net Zero freight emissions policy
- Rest stop improvement program
- Cohesive rail freight policy
- Network wide constraints mapping to inform investment prioritisation
- Leveraging technology and data.



West Region overview



6,659 kilometres of state road network
2,893 kilometres in the Unincorporated Area



30 Local Government Areas

Key projects:

- \$1.7 billion Newell Highway Upgrade Program
- \$4.5 billion Great Western Highway upgrades
- \$562.5 million Inland Rail Grade Separation
- \$145 million sealing the Cobb & Silver City Highway



Flood recovery and maintenance

Transport continues to prioritise responding to priority flood damage across the network including heavy patching and road repairs across the Central West, Western Plains, North West and Far West.

Since February 2022:

- more than 17,000 potholes repaired in the North West district and;
- More than 135,000 potholes across the West region



135,000

potholes repaired across the West Region
since February 2022



Key projects

Newell Highway Program Alliance

Delivery of about 40 new overtaking lanes and various safety upgrades along the Newell Highway to improve safety and freight efficiency.

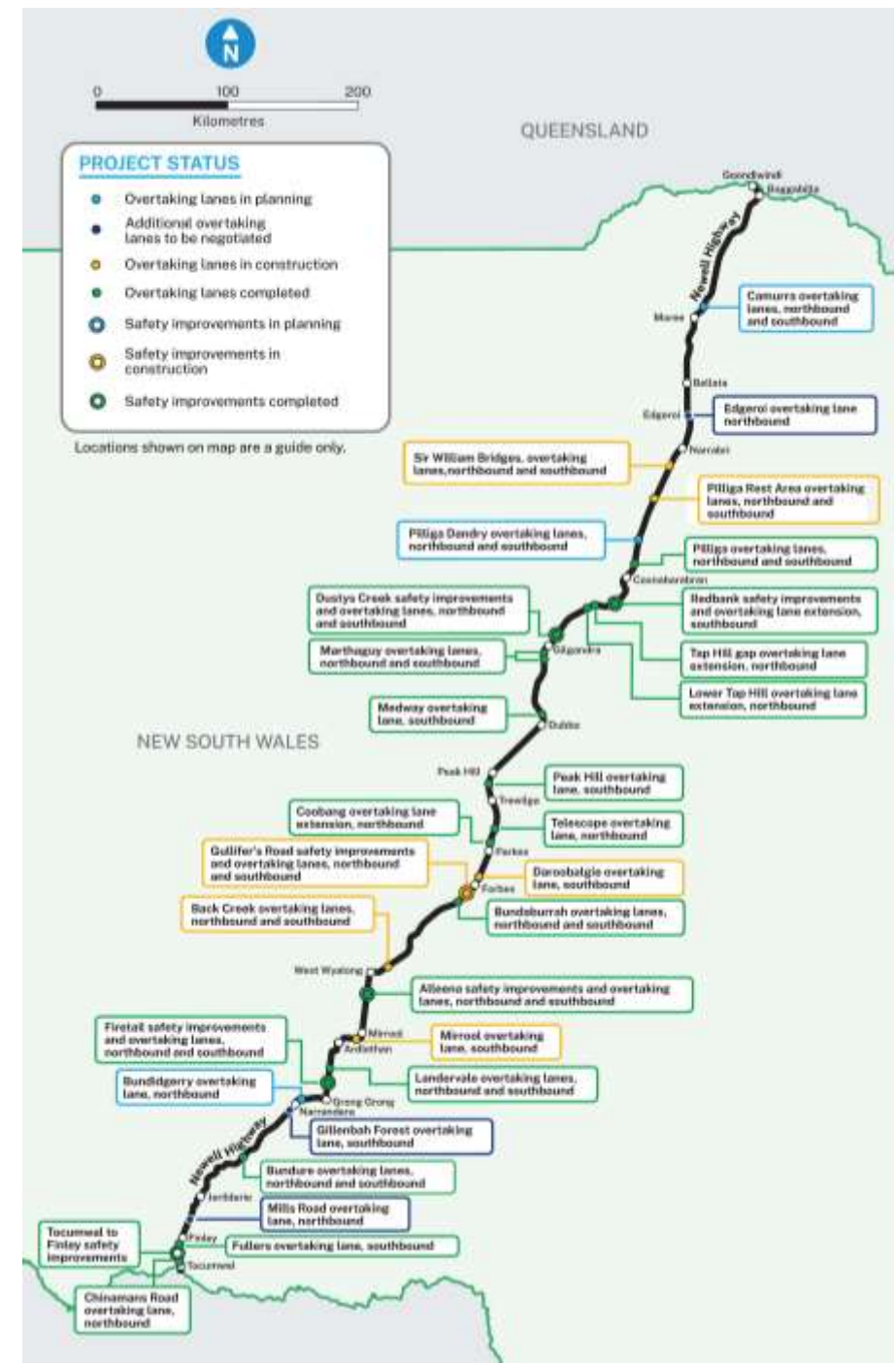
Projects in construction:

- **Pilliga** – four new overtaking lanes between Coonabarabran and Narrabri
- **Daroolbalgie** – new southbound overtaking lane north of Forbes
- **Mirrool** – new southbound overtaking lane north of Ardlethan
- **Gullifers Road** – two new overtaking lanes and safety improvement work south of Forbes



27 overtaking lanes completed

8 overtaking lanes in construction



Key projects

Newell Highway heavy duty pavement upgrades, Narrabri to Moree (stage 1)

Funding: \$261.17 million for stage 1 – Australian Government and NSW Government

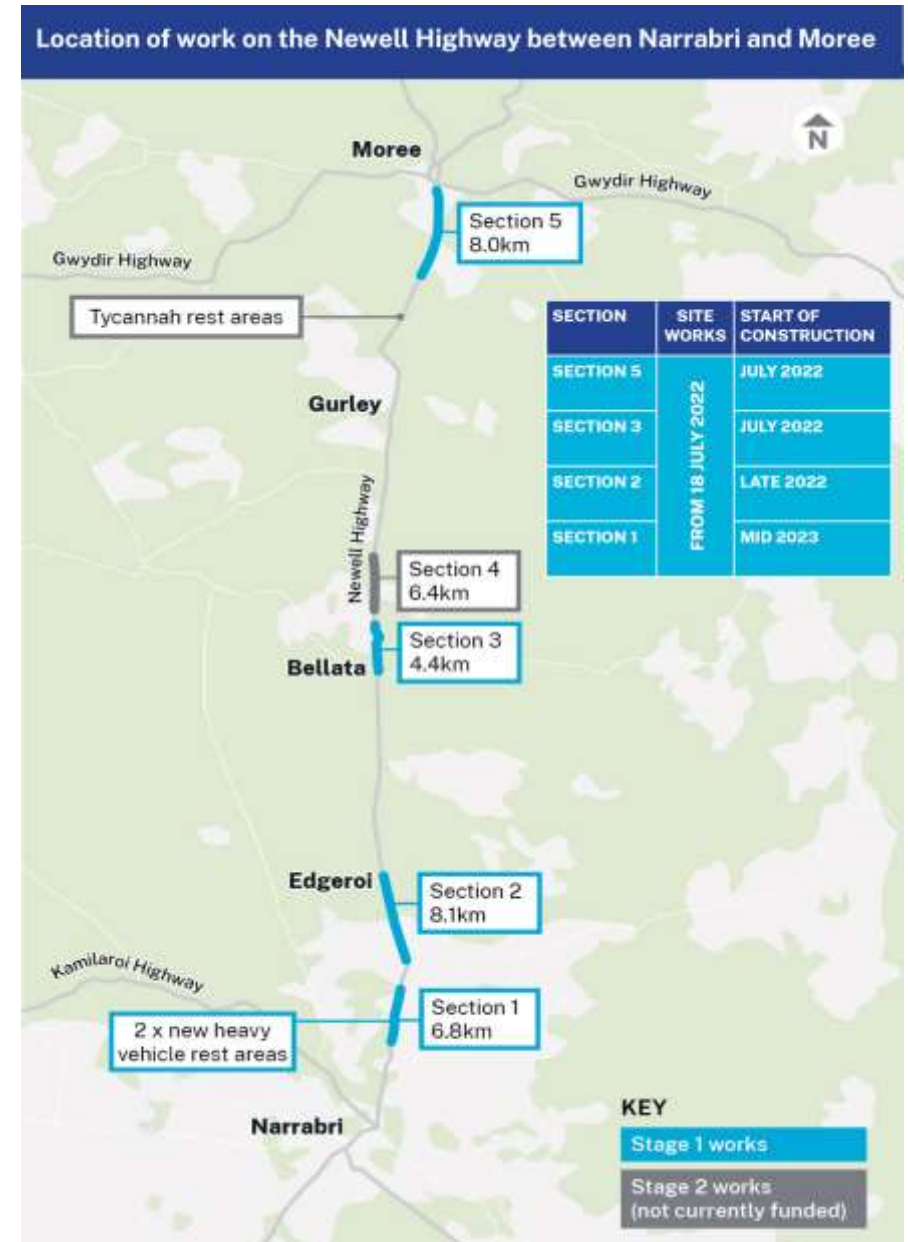
Construction commenced: July 2022

Estimated Completion: early 2026

Stage 1 includes:

- 27.3 kilometres of new road pavement across 4 priority sections between Narrabri and Moree
- intersection improvements
- widening of road shoulders
- provision of five additional overtaking lanes
- 2 x new heavy vehicle rest areas in section 1

Funding for Stage 2 which includes section 4 and Tycannah rest area upgrade will be delivered as part of the North Moree package of work.



Key projects

Newell Highway heavy duty pavement upgrades, North Moree

Funding: \$330 million Australian Government and NSW Government

The project includes planning for up to 30.2 kilometres (three segments) of new road pavement, intersection improvements and widening of road shoulders.

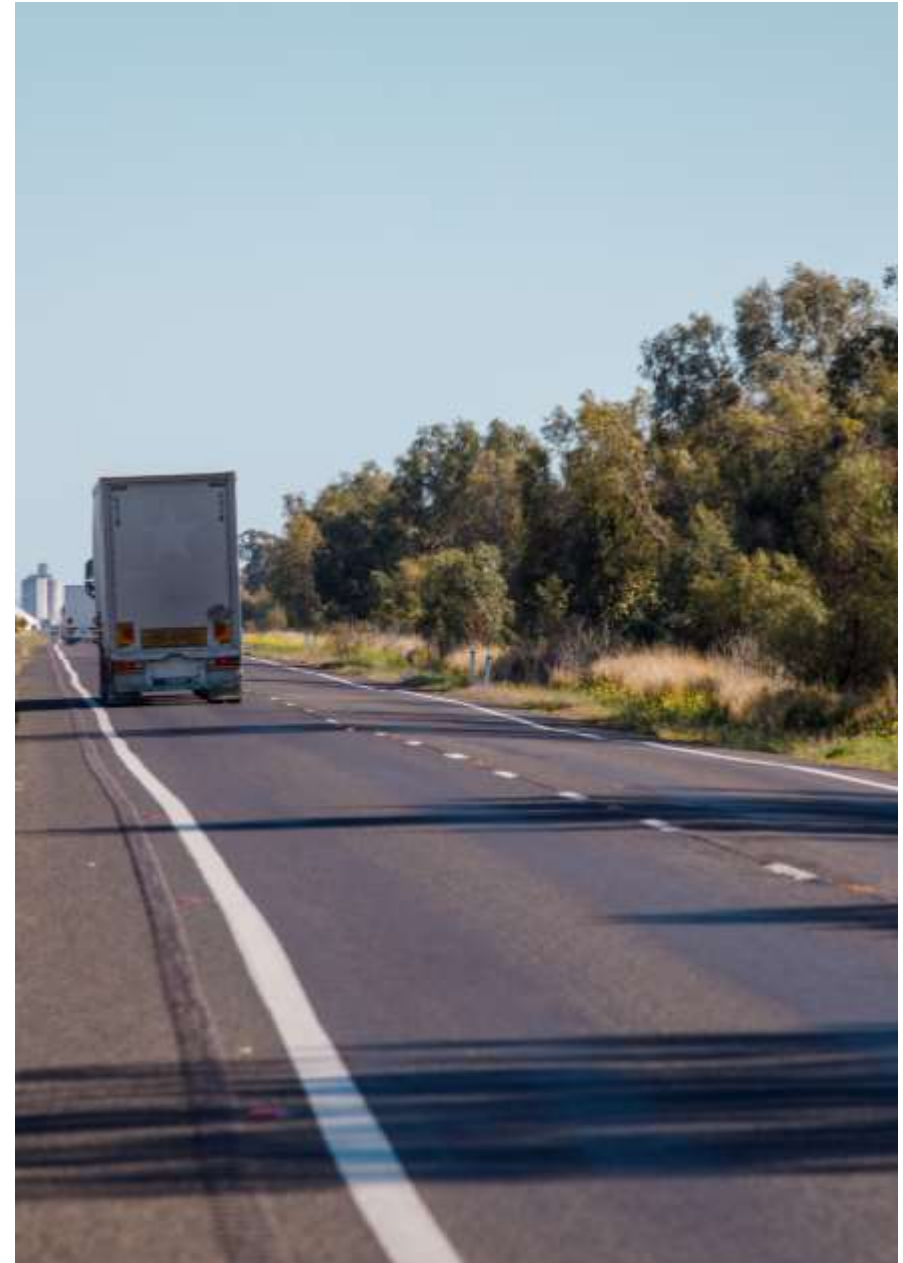
This will improve safety for motorists and reduce future maintenance requirements.



Improving
safety



Better and more
reliable trips
for people, business and freight



Key projects

Newell Highway / Oxley Highway intersection upgrade

Funding: \$40 million – Australian Government and NSW Government

- Improve safety and freight efficiency at the Newell Highway Oxley Highway Intersection upgrade 4km north-east of Coonabarabran. This project builds on the work already completed for the planning of the Coonabarabran Bypass.

Pilliga Widening Concept Design –Newell Highway Upgrade

Funding: \$8.8 million for concept design - NSW Government

- Safety design treatments being investigated include a one metre wide centre line, widened shoulders, flatter slopes on the embankments either side of the highway
- Contract for the concept design and strategic business case has been awarded to ARUP.



Pilliga Widening Concept Design



Key projects

Kamilaroi Highway Safety Upgrades Baan Baa to Turrawan

**Funding: \$26.4 million - NSW Government Saving Lives
on Country Roads Program**

Features include:

- wide centreline flexible centre wire rope barrier
- rumble strips on centre and outside lines
- widened clear zone on roadside
- raised retroreflective pavement markers
- dual overtaking lanes within section 3
- pullover bays for oversized vehicles



Spring Creek Bridge Replacement

- The NSW Government has committed to replace the Spring Creek bridge on the Kamilaroi Highway, 9.5kms west of Narrabri.
- Plans to demolish the old bridge and replace with a new bridge are already being developed with a design expected in early 2023.



Washpool Flood Mitigation, Gwydir Highway

Funding: \$7.1 million - NSW Government



- Work includes replacing an existing three cell box culvert with a 20-cell culvert structure which will reduce the duration of road closures during flood events.
- The highway will also be raised and widened as well as upgrading roadside drainage, improving safety for motorists.

Key projects

Inland Rail Grade Separating Road Interfaces Program

Funding: \$187.5 million – Australian Government and NSW Government

This project aims to improve freight productivity and access on the road network as a result of the Inland Rail project by building road bridges over the railway line.

There are 22 sites being assessed with four priority locations currently being developed:

- Castlereagh Highway near Curban - new crossing
- Tomingley Road near Narromine
- Newell Highway at Tichborne
- Olympic Highway at Harris Gates

Planning for the remaining 18 sites has started with strategic investigations occurring to prioritise each site.

Location of four priority sites for grade separation

